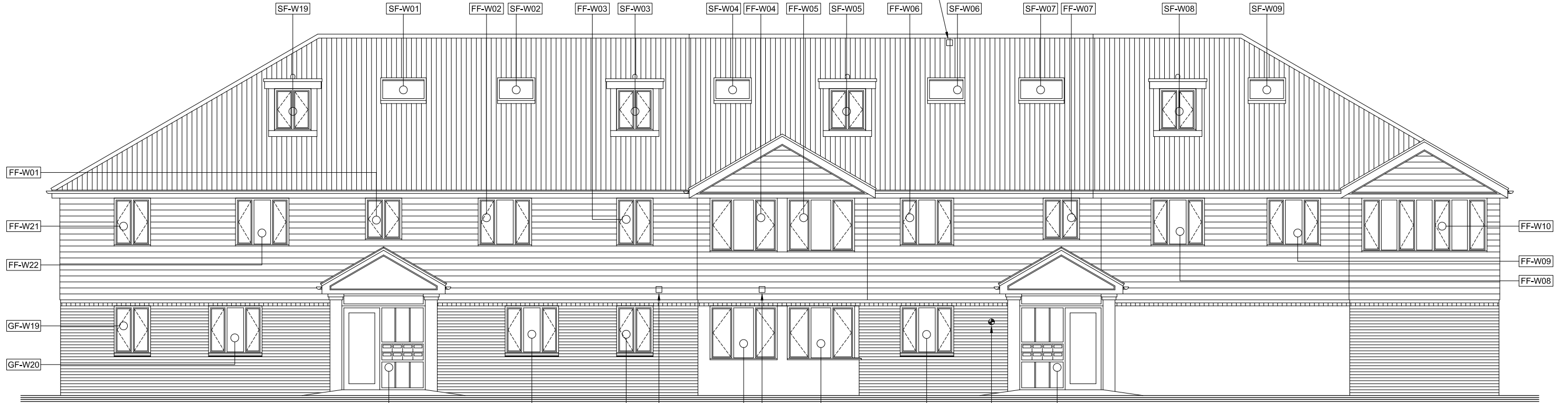
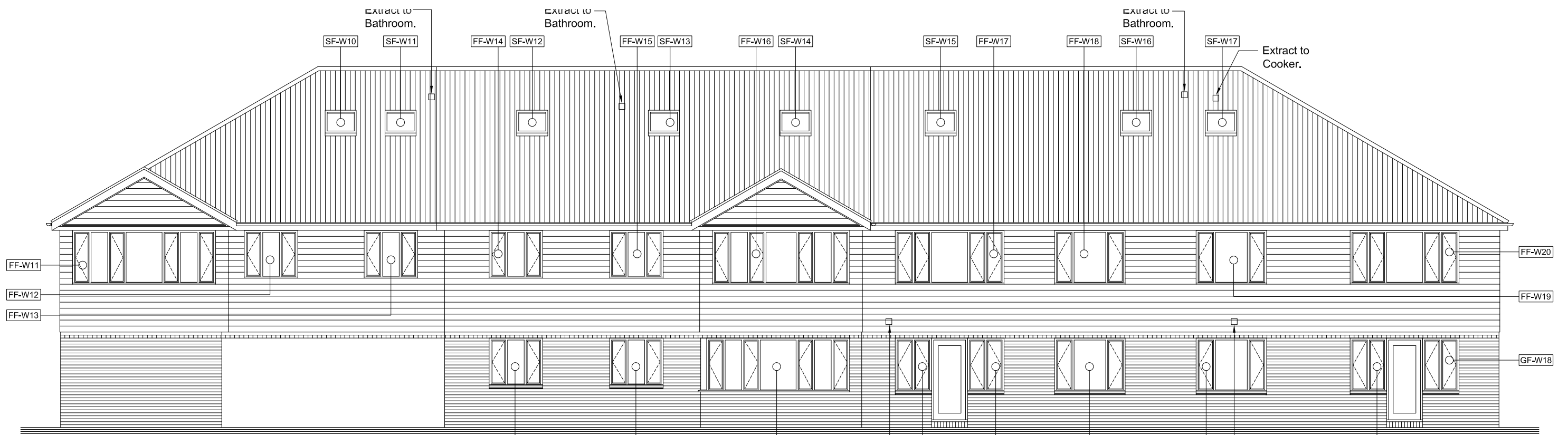


Opening Vent providing 1sq m of ventilation area connected to smoke detectors placed at landing level. A yellow manual 'Fireman's' type switch is to be fitted close to the final exit for fire brigade use.

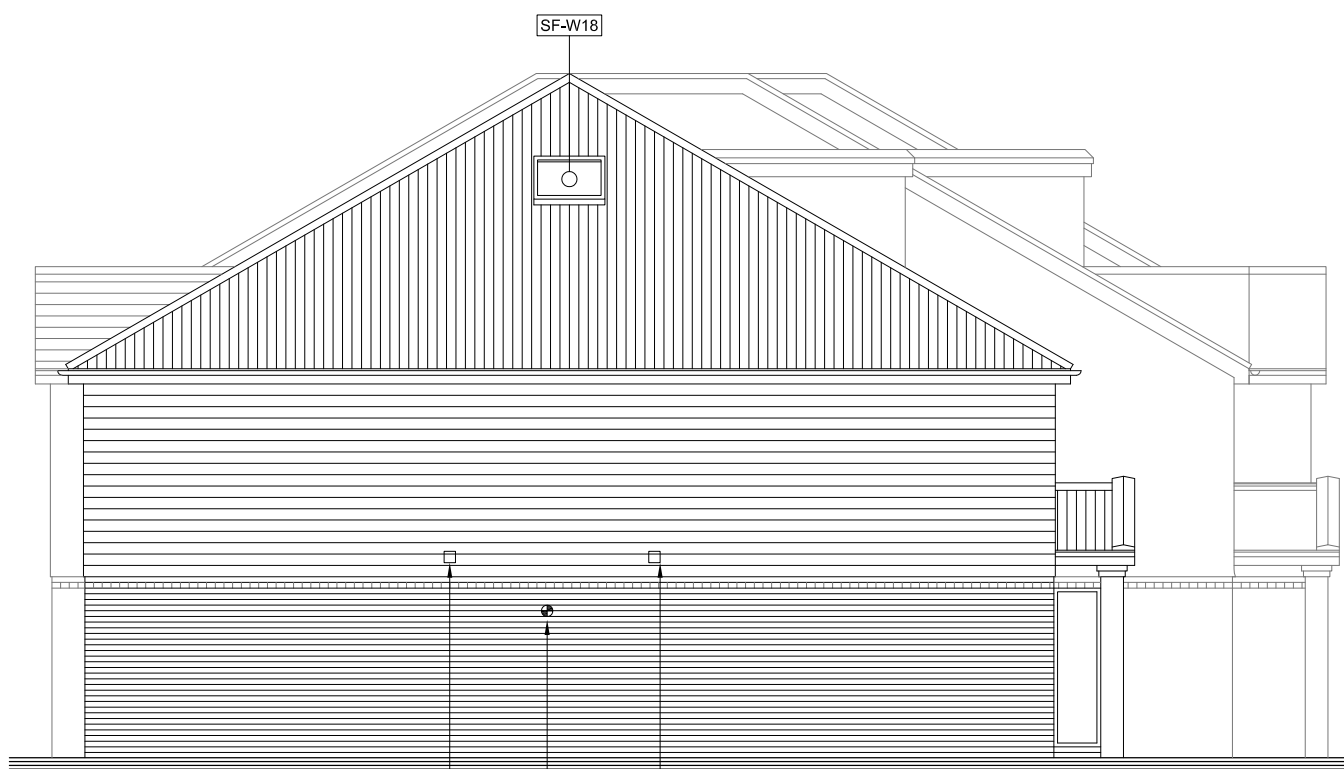
Opening Vent providing 1sq m of ventilation area connected to smoke detectors placed at landing level. A yellow manual 'Fireman's' type switch is to be fitted close to the final exit for fire brigade use.



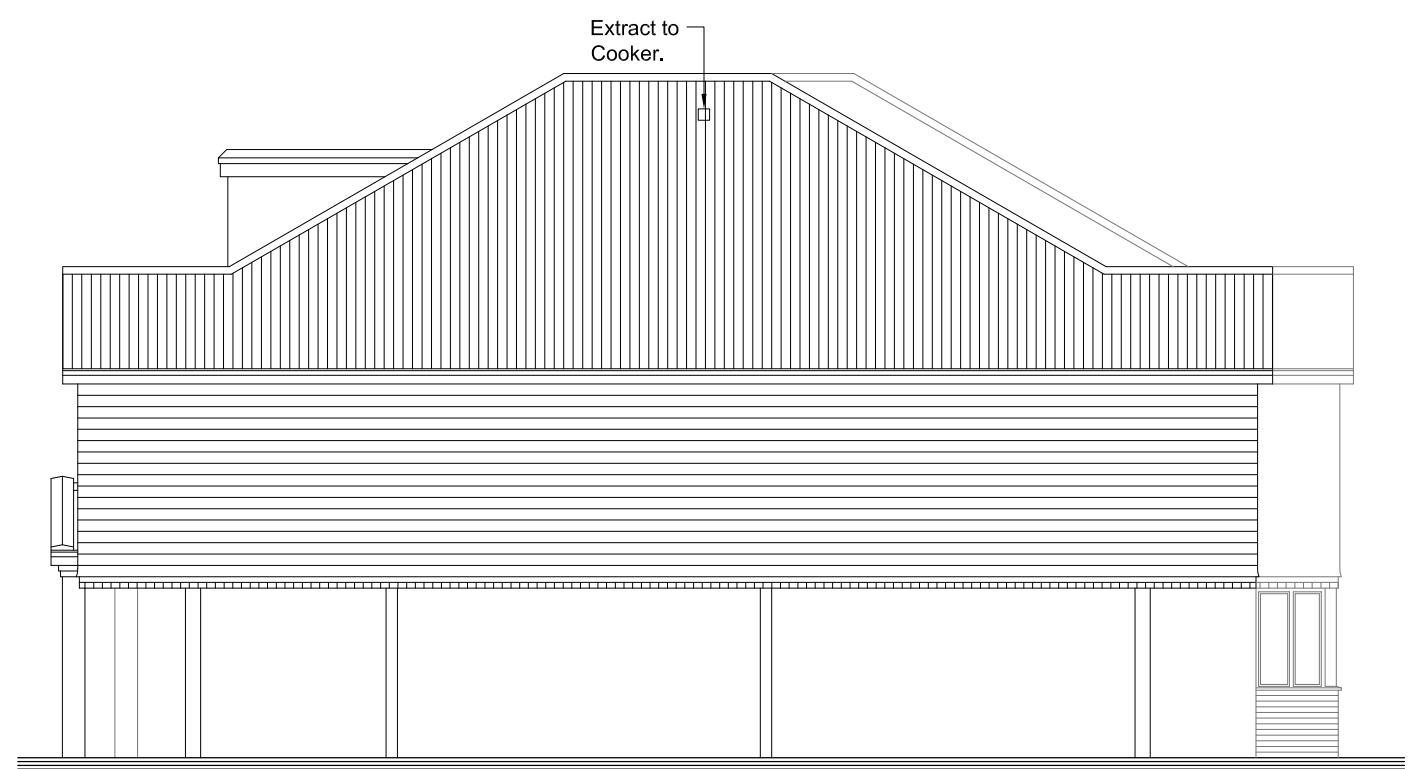
**FRONT ELEVATION**



**REAR ELEVATION**



**SIDE ELEVATION**



**SIDE ELEVATION**

A	15-01-13	RE	Extract and Flue Positions indicated.
rev	date	by	description

**ESPOSITO MCLEAN**  
Architectural Consultants

UNIT 6 · CHANCERS FARM · FOSSETTS LANE · FORDHAM  
COLCHESTER · ESSEX · CO6 3NY  
Telephone: 01206 241809 · Fax: 01206 243478  
studio@emarchcon.co.uk · www.emarchcon.co.uk

client: **Parkland Developments Ltd**

project: **Former Public House Site  
South Road  
South Ockendon**

plan title: **Elevations**

scale: **1:100** drawn by: **RE**

date: **Nov 2012** checked: **SM**

drawing no: **1040/101** revs/ions: **A**

DO NOT SCALE FROM DRAWING.  
If you require clarification of any dimensions please contact:  
Esposito Mclean Architectural Consultants Ltd  
This drawing should not be copied or reproduced in whole or in part, nor used  
in conjunction with any project with or without permission and remains the  
copyright of Esposito Mclean Architectural Consultants Ltd

Client:



**Parkland**  
DEVELOPMENTS

UNIT 3 PARK FARM, WITHAM ROAD,  
BLACK NOTLEY, BRAINTREE ESSEX.  
CM77 8LQ  
TEL 01376 340866 FAX 01376 340632  
EMAIL info@parklanddevelopments.co.uk  
www.parklanddevelopments.co.uk